



A New Garden

We would like to hear your views

16 - 23 September 2020

Vauxhall is changing.

Dear Neighbours & Friends,

New high-rise blocks and in-fills of unused land and back street spaces are increasing the density of our urban community. More people are choosing to live here and the need for outdoor shared space has never been more acute. Places that everyone, local children and our older residents, can visit. Places that enhance lives and lift spirits.

For over 40 years Vauxhall City Farm has provided tens of thousands of local residents space to touch nature. Our animals and birds are much loved. Families regularly visit, local children, parents and grandparents are delighted by our alpacas, horses, ducks, rabbits, pigs, sheep and Trevor, our doted-on turkey. There's nothing more satisfying than seeing people smiling around the farm.

Our allotments cover around a fifth of the site here. They have served local residents well for many years. But with a decrease in their use recently and large areas being overgrown and unused our trustees have had to take a long, hard look and have made the decision that a change is needed. As a charity we have to ensure that our limited resources benefit as many people as possible. That is why we have decided to start again and create a garden that the whole community will benefit from. A new garden for a changing community here in Vauxhall.

We want our new garden to be open for all, allowing thousands of local people, old and young alike, to enjoy themselves and to get their hands dirty. The garden and greenhouse will provide many more people with volunteering and opportunities to learn about, work with and enjoy plants. The wider educational value that the garden will provide is one of the main reasons why we want to make these changes. It will impact thousands of young lives, allowing children and vulnerable young people to develop a love for plants and healthy food.

Vauxhall City Farm has long supported over 80 inner-city primary and special needs schools. We have helped pupils learn about animals and birds. This renewal of the farm's plant area will enable the farm to enhance the benefits that we provide to local schools to include the plant kingdom and to respond to growing concerns over children's diets. Lambeth has one of the worst levels of child obesity in the country and as a local charity we are compelled to respond to that need. We want to inspire children, families and older residents to change their lives.

Yours,

Monica Tyler, CEO

We believe that opening the doors of our garden to all will be welcomed across the local community.

But we want to hear what you think.

Meet Us

The Café at Vauxhall City Farm
**Tue 22nd Sep
16:00 - 19:00**

Exhibition

The Café at Vauxhall City Farm
**16th - 23rd Sep
10:30 - 15:30**

Tell us Online

Fill in a questionnaire at:
www.vauxhallcityfarm.org/garden

Open Times

Tue – Sun 10.30 – 15.30

Address

**165 Tyers Street
London
SE11 5HS**

Phone

**020 7582 4204
www.vauxhallcityfarm.org**



Charity Number 281512

A New Garden

We would like to hear your views

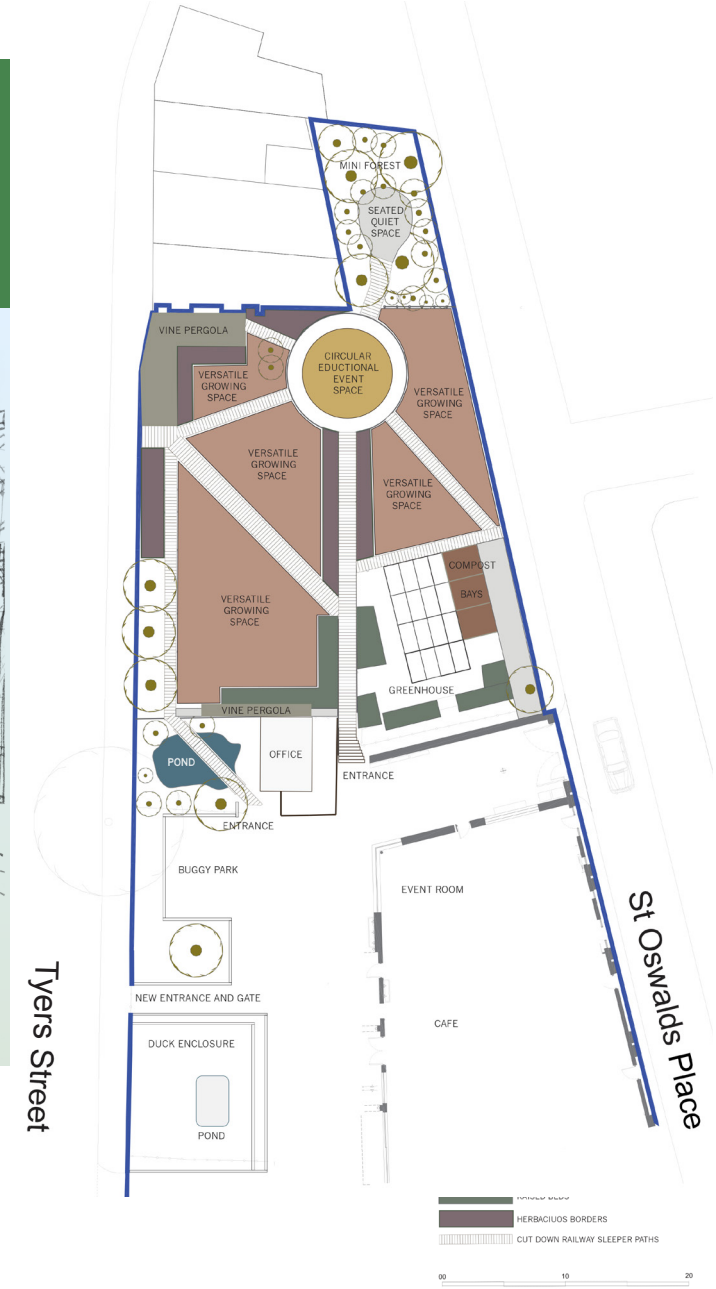
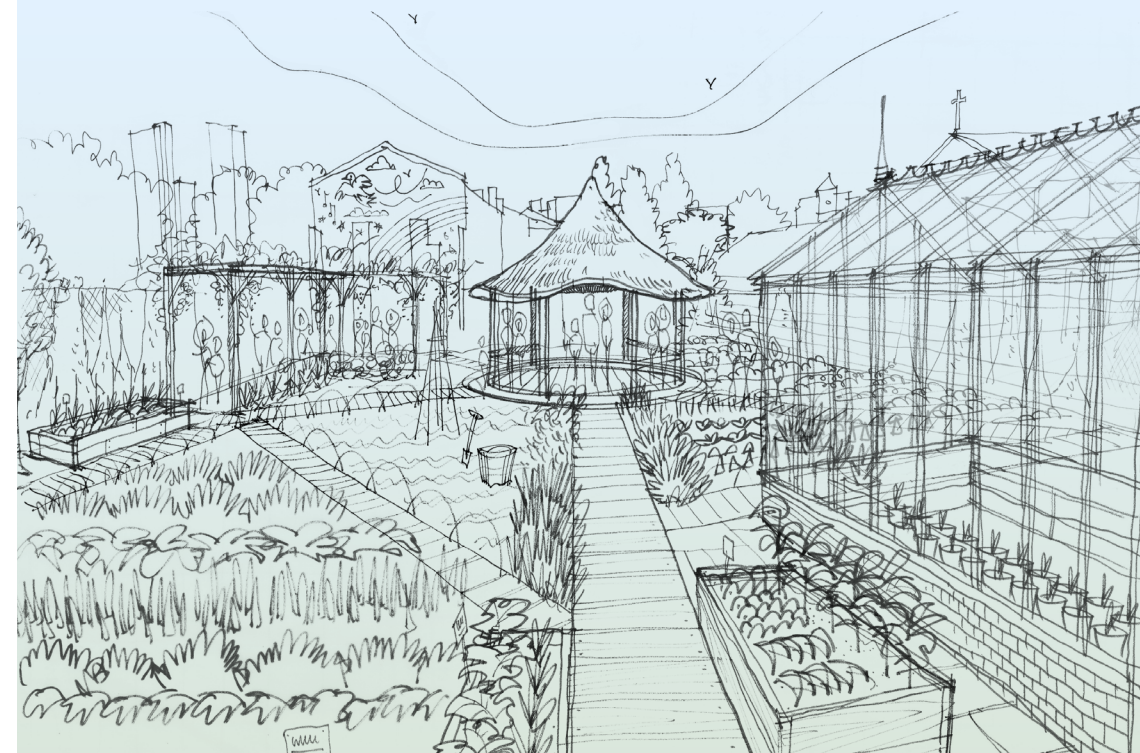
Our hopes for the farm include:

Let us know what you think about the garden

www.vauxhallcityfarm.org/garden

2. A New Garden

We want to create a new landscaped garden with herbaceous borders, planting beds, vegetable beds, quiet spaces and seating, together with a new greenhouse, composting bays and outdoor education space for schools.



Tyers Street

St Oswalds Place

HERBACEOUS BORDERS
CUT DOWN RAILWAY SLEEPER PATHS
00 10 20
Meters

1. A New Entrance

Moving the entrance to the Farm further down Tyers Street to our Café to allow easier access for families, with new pushchair facilities and easy access to the animals and garden.



3. A New Canopy

Pigeons are a big concern for our neighbours. We would like to install a net over the animal section of the site to restrict pigeons from eating the animals' food. This would address a significant problem for our neighbours.



4. A New Mural

Before the café was built the Farm used to have a mural on a blank rear wall. We would like to paint a new mural on the blank side elevation of the townhouse at 16 Tyers Street removing an eyesore.

